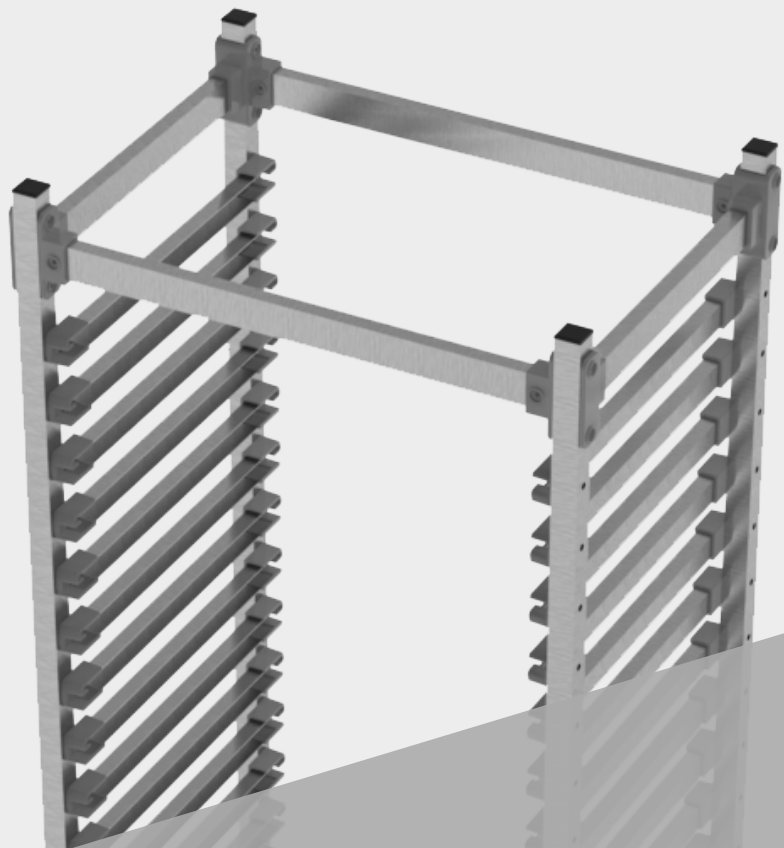


# Modular System Equipments

2020 Catalog



[www.sebagmbh.de](http://www.sebagmbh.de)

**SEBA**  
Handels GmbH

## ISO Module Products ;

The HTM 71 standards apply to the kinds of modular storage trays utilized in healthcare and pharmacy settings. The standard legislative requirements of HTM 71 include:

- » Modular storage trays which can be supplied in an open format using liner or basket tray solutions
- » Storage trays may also feature doors
- » All storage solutions should enable easy access and organization for products and treatments

A strong and durable storage system is required for the storage of various medical items and equipment.

Through the 600 x 400 mm ISO standard module (HTM71) which can be inserted into both fixed and mobile storage units. We are able to provide a comprehensive, intelligent and scalable storage system to optimize the management of materials from central stores through to point of use.



# Start Designing Your Medical Storages WITH US!



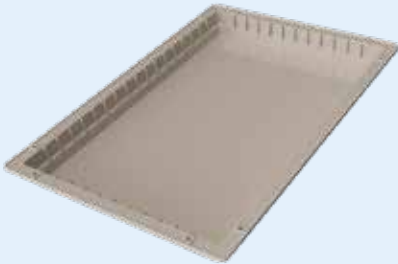
# ISO Module - HTM71

## Trays and Baskets

Color Options  

### 5 cm Tray

Dimensions: 5 x 40 x 60 cm



**ABS Plastic**      **Antibacterial**  
 Model No : 001.0546      011.0546

### 10 cm Tray

Dimensions: 10 x 40 x 60 cm



**ABS Plastic**      **Antibacterial**  
 Model No : 001.1046      021.1046

### 20 cm Tray

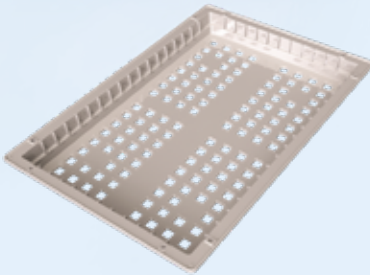
Dimensions: 20 x 40 x 60 cm



**ABS Plastic**      **Antibacterial**  
 Model No : 001.2046      011.2046

### 5 cm Basket

Dimensions: 5 x 40 x 60 cm



**ABS Plastic**      **Antibacterial**  
 Model No : 001.1546      011.1546

### 10 cm Basket

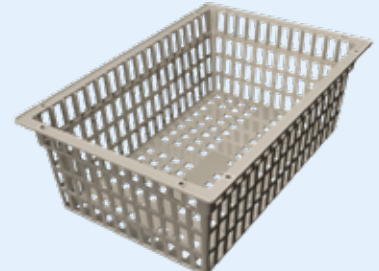
Dimensions: 10 x 40 x 60 cm



**ABS Plastic**      **Antibacterial**  
 Model No : 001.1146      011.1146

### 20 cm Basket

Dimensions: 20 x 40 x 60 cm



**ABS Plastic**      **Antibacterial**  
 Model No : 001.2146      011.2146

### 5 cm Short Divider

Dimensions: 5 x 40 cm



**ABS Plastic**      **Antibacterial**  
 Model No : 001.0540      011.0540

### 10 cm Short Divider

Dimensions: 10 x 40 cm



**ABS Plastic**      **Antibacterial**  
 Model No : 001.1040      011.1040

### 20 cm Short Divider

Dimensions: 20 x 40 cm



**ABS Plastic**      **Antibacterial**  
 Model No : 001.2040      011.2040

### 5 cm Long Divider

Dimensions: 5 x 60 cm



**ABS Plastic**      **Antibacterial**  
 Model No : 001.0560      011.0560

### 10 cm Long Divider

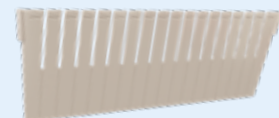
Dimensions: 10 x 60 cm



**ABS Plastic**      **Antibacterial**  
 Model No : 001.1060      021.1060

### 20 cm Long Divider

Dimensions: 20 x 60 cm



**ABS Plastic**      **Antibacterial**  
 Model No : 001.2060      011.2060

# ISO Module - HTM71 Trays and Baskets

## 5 cm Tray

Dimensions: 5 x 40 x 60 cm



Model No : 002.0546 Polycarbonate

## 10 cm Tray

Dimensions: 10 x 40 x 60 cm



Model No : 002.1046 Polycarbonate

## 20 cm Tray

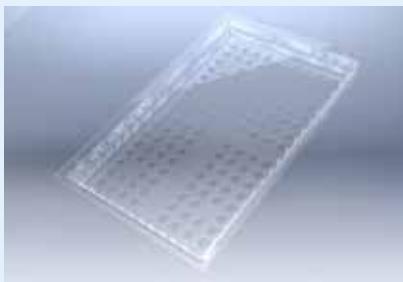
Dimensions: 20 x 40 x 60 cm



Model No : 002.2046 Polycarbonate

## 5 cm Basket

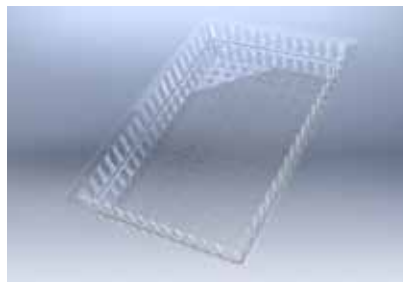
Dimensions: 5 x 40 x 60 cm



Model No : 002.1546 Polycarbonate

## 10 cm Basket

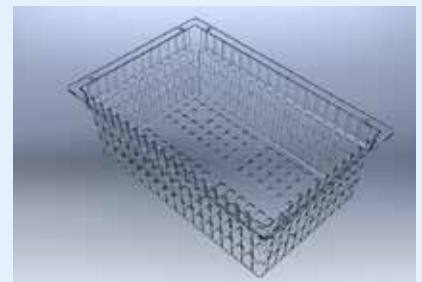
Dimensions: 10 x 40 x 60 cm



Model No : 002.1146 Polycarbonate

## 20 cm Basket

Dimensions: 20 x 40 x 60 cm



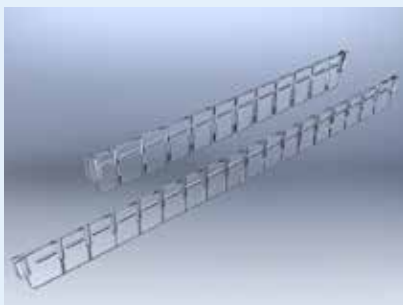
Model No : 002.2146 Polycarbonate

## 5 cm Divider

*Short Divider - Polycarbonate*

Model No : 002.0540

Dimensions : 5 x 40 cm



*Long Divider - Polycarbonate*

Model No : 002.0560

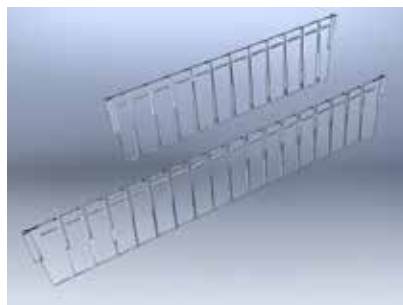
Dimensions : 5 x 60 cm

## 10 cm Divider

*Short Divider - Polycarbonate*

Model No : 002.1040

Dimensions : 10 x 40 cm



*Long Divider - Polycarbonate*

Model No : 002.1060

Dimensions : 10 x 60 cm

## 20 cm Divider

*Short Divider - Polycarbonate*

Model No : 002.2040

Dimensions : 20 x 40 cm



*Long Divider - Polycarbonate*

Model No : 002.2060

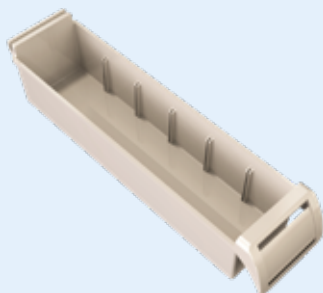
Dimensions : 20 x 60 cm

# Medicine Drawers - Side Panels and Accessories

Color Options  

## 8 cm Drawer

Dimensions: 8 x 6 x 29,5 cm



**ABS Plastic**      **Antibacterial**  
Model No : 001.0080      011.0080

## Short Side Panel

Dimensions: 30 x 42 cm



**ABS Plastic**      **Antibacterial**  
Model No : 001.3042      011.3042

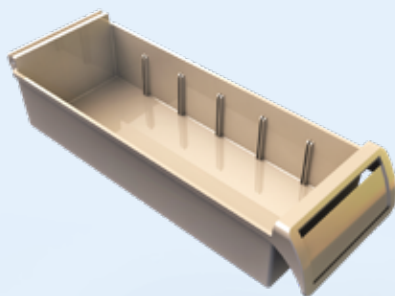
## Label Holder



Model No : 001.0001 **ABS Plastic**

## 12 cm Drawer

Dimensions: 12 x 6 x 29,5 cm



**ABS Plastic**      **Antibacterial**  
Model No : 001.0120      011.0120

## Long Side Panel

Dimensions: 30 x 62 cm



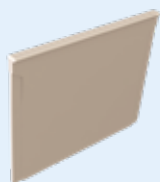
**ABS Plastic**      **Antibacterial**  
Model No : 001.3062      011.3062

## Stoper (Set)



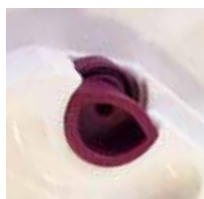
Model No : 001.0002 **ABS Plastic**

## 8 cm Divider



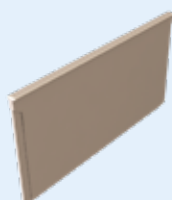
Model No : 001.1080 **ABS Plastic**

## Side Panel Wheel (Set)



Model No : 001.0003 **ABS Plastic**

## 12 cm Divider



Model No : 001.1120 **ABS Plastic**

## Side Panel Tap



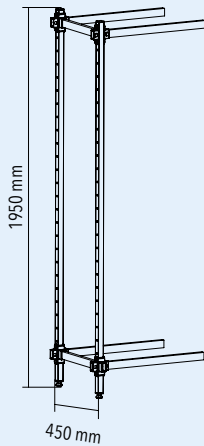
Model No : 001.0004 **ABS Plastic**

## Taps and Wheels Application

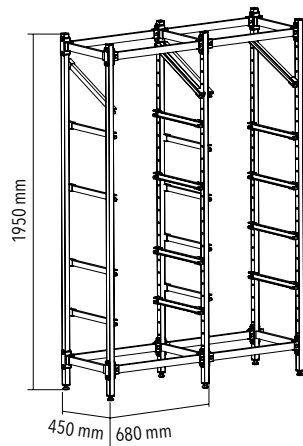


# Open Rack System Apparatus

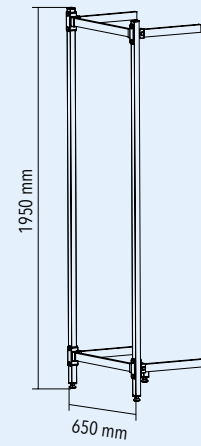
## E Type Additional Module



## E Type



## U Type Additional Module

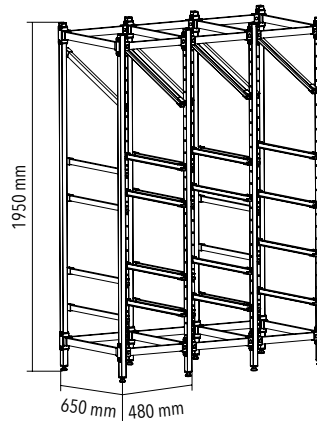


## Rail Apparatus Left and Right (Set)



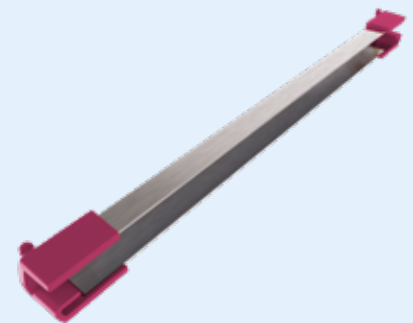
Model No : 001.0015 (Left and Right)

## U Type



## U Aluminium Profile Rail

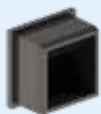
Dimensions: 30 x 20 x 570 mm



Model No : 001.0014

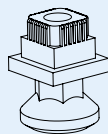
## Profile Tap and Adjustable Foot

Dimensions: for 30 x 30 mm Profile



Profile Tap

Model No : 001.0010



Adjustable foot

001.0011

## L Shape for Rack

Dimensions: for 30 x 30 / 20 x 40 mm Profile



Model No : 001.0012

## T Shape for Rack

Dimensions: for 30 x 30 / 20 x 40 mm Profile



Model No : 001.0013

## Screw and Nut (Set)

Dimensions: M5



Model No : 001.0005

## Tap and Cup



Tap

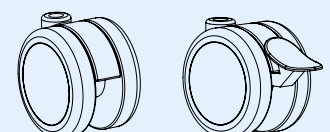
Model No : 001.0006

Cup

001.0007

## Wheels

Dimensions: Ø50




Without Break


Model No : 001.0008

With Break

001.0009

**SEBA**  
Handels GmbH

 Ziegeleiweg 6A, 51 149 Köln-Germany

 +49 162 696 3172

 [info@sebagmbh.de](mailto:info@sebagmbh.de)

 [www.sebagmbh.de](http://www.sebagmbh.de)